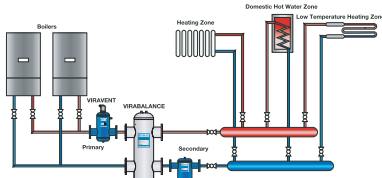
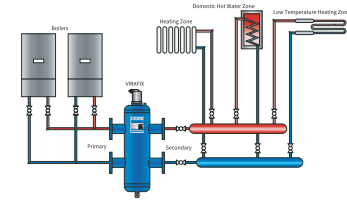
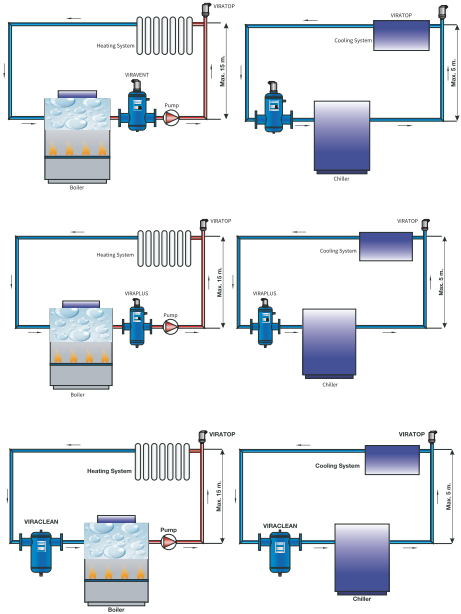
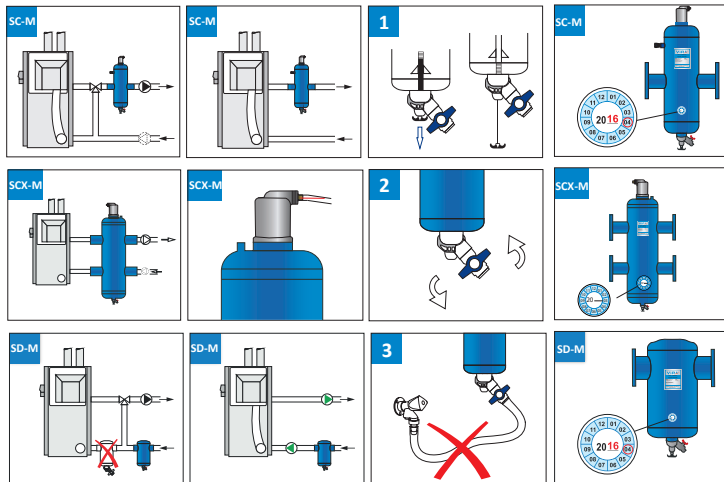


Connection



Magnetic installation instruction



VIRA®



User Manual

Dear Customer,

Thank you for choosing our VIRAVENT, VIRACLEAN, VIRAPLUS, VIRAFIX and VIRABALANCE product that is produced in our facilities with extreme care.

Mission of Vira Isı and Industrial Products A.Ş. which manufactures with completely domestic capital and its own experience using the highest technology is to be the symbol of quality and reliability by offering the customers products and service in the world standards in an environmental conscious. Contact to Vira Isı and Industrial Products A.Ş. if you have any problem. Vira Isı ve Industrial Products A.Ş. operation instructions includes specifications, functions, introductory information operation and maintenance explanations of the appliance.

To use your appliance more efficiently make sure to read the operation instructions before operation.

In Some sections of this manual the following signs have been

Caution : Requires special

Warning: Requires special

1-General Warnings

- ▲ It can be used for water and water/glycol mixtures (max. %50)
- ▲ Installation and maintenance may only be carried out by a qualified installer.
- ▲ Incorrect installation or incompetent use or repairs may render the guarantee invalid.
- A Your product is designed to separators air and/or dirt separators and/or hydraulic balancing tank. So, it must be connected to a heating/cooling system compliant with its power and performance.
- ▲ VIRAVENT, VIRACLEAN, VIRAPLUS, VIRAFIX and ViRABALANCE are designed and manufactured according to Sound of Engineering as stated in the Pressure Equipment Directive (2014/EU/68).
- ▲ A Touching the product in operation may cause burn.
- ▲ Always contact your installer in case of malfunction.
- ▲ Not suited for outdoor use.
- ▲ A During the installation all national and local regulations must be taken into consideration.

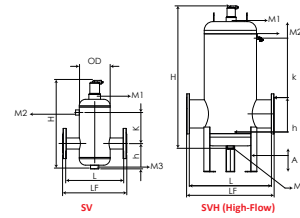
2-Safety Precautions

- Do not use your product for the purposes it is not designed for.
- Do not use your product for drinking water, oil and dangerous or inflammable substances.
- When working on the VIRAVENT, VIRACLEAN, VIRAPLUS, VIRAFIX and VIRABALANCE always ensure there is no pressure in the installation and let it cool down.
- Hot drain water must be drained to an appropriate drainage.
- Do not use the drain valve for (re) filling on the VIRACLEAN, VIRAPLUS and VIRAFIX.
- Do not use the air drain valve for filling on the VIRAVENT and VIRAFIX.

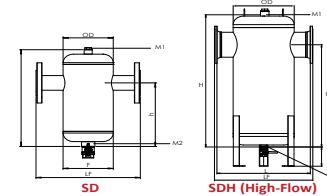
3-Points That Should be Taken Into Considerations to Use Your Product

- Having the service of the appliance done can be efficient in energy saving.
- Use the proper water your installation.

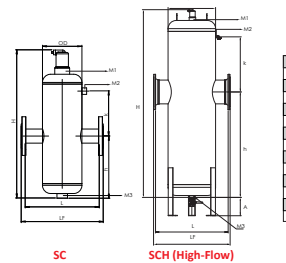
Technical Parameters



		Standart; Nom. 1.5 m/s										Hi-Flow; nom. 3 m/s															
		nom. = 15m³/h										max = 3m³/h															
mm	in	OD	L	LF	H	h	h ₁	h ₂	h ₃	h ₄	h ₅	h ₆	h ₇	h ₈	h ₉	h ₁₀	h ₁₁	h ₁₂	h ₁₃	h ₁₄	h ₁₅	h ₁₆	h ₁₇	h ₁₈	h ₁₉	h ₂₀	
SV	50	168.3	330	350	380	138	3.3	12	3		650	150	5.8	21	11.8							1.3/4"	1/2"	1"			
SV	65	168.3	330	350	398	138	3.3	12	3		650	150	5.8	21	11.8						1.3/4"	1/2"	1"				
SV	80	219.1	450	470	607	177	8.3	20	2.9		770	200	10.0	36	11.6						1.3/4"	1/2"	1"				
SV	100	219.1	455	475	607	177	12.5	45	3.7		770	200	12.3	84	14.6						1.3/4"	1/2"	1"				
SV	125	323.9	615	635	797	267	20.8	75	4.2		1067	250	16.7	132	16.8						1.3/4"	1/2"	1"				
SV	150	323.9	615	635	797	267	31.3	112.5	4.9		1267	250	13.8	150	19.1						1.3/4"	1/2"	1"				
SV	200	400	745	775	897	297	52.1	187.5	5.8		1317	300	14.2	139	23.1						1.3/4"	1/2"	1"				
SV	250	500	860	890	1027	357	83.3	300	6.9		1677	300	14.6	139	23.1						1.3/4"	1/2"	1"				
SV	300	600	975	1005	1157	407	114.6	412.5	7.7		2037	400	14.6	138	31	20.8					1.3/4"	1/2"	1"				
SV	350	700	1098	1128	1290	450	143.8	517.5	8.8		2700	450	13.8	103.8	27.0	13.4					1.3/4"	1/2"	1"				
SV	400	800	1194	1226	1410	480	188.1	678	2.0		2707	600	13.6	119.6	27.0	13.4					1.3/4"	1/2"	1"				
SV	450	900	1300	1330	1548	540	238.1	858			2700	600	13.6	119.6	27.0	13.4					1.3/4"	1/2"	1"				
SV	500	1000	1400	1430	1680	600	294.2	1059			2700	600	13.6	119.6	27.0	13.4					1.3/4"	1/2"	1"				
SV	600	1200	1600	1630	2020	680	423.8	1525.5			2700	3870	14.7	305.2	27.0	13.4					1.3/4"	1/2"	1"				



		Standart; Nom. 1.5 m/s										Hi-Flow; nom. 3 m/s															
		nom. = 1.5 m³/h										max. = 3 m³/h															
mm	in	OD	L	LF	H	h	h ₁	h ₂	h ₃	h ₄	h ₅	h ₆	h ₇	h ₈	h ₉	h ₁₀	h ₁₁	h ₁₂	h ₁₃	h ₁₄	h ₁₅	h ₁₆	h ₁₇	h ₁₈	h ₁₉	h ₂₀	
SD	50	168.3	330	350	398	265	3.3	12	3		565	417	5.8	21	11.8						1/2"	1"					
SD	65	168.3	330	350	398	265	6.3	22.5	2.7		565	417	10.0	36	11.6						1/2"	1"					
SD	80	219.1	450	470	522	347	8.3	30	2.9		645	447	15.0	54	12.4						1/2"	1"					
SD	100	219.1	455	475	522	347	12.5	45	3.7		645	447	21.3	84	14.4						1/2"	1"					
SD	125	323.9	615	635	715	447	20.8	75	4.2		982	738	16.7	132	16.8						1/2"	1"					
SD	150	323.9	615	635	712	447	31.3	115	4.9		982	738	13.8	150	19.4						1/2"	1"					
SD	200	400	745	775	911	617	52.1	187.5	5.8		1233	934	14.2	139	23.1						1/2"	1"					
SD	250	500	860	890	1037	680	83.3	300	6.9		1593	1243	14.6	139	23.1						1/2"	1"					
SD	300	600	975	1005	1172	747	114.6	412.5	7.7		1947	1547	13.8	103.8	27.0	13.4					1/2"	1"					
SD	350	700	1098	1128	1355	810	143.8	517.5	8.8		2745	1812	13.6	119.6	27.0	13.4					1/2"	1"					
SD	400	800	1194	1226	1485	870	188.1	678	2.0		2627	2023	13.6	119.6	27.0	13.4					1/2"	1"					
SD	450	900	1300	1330	1573	930	238.1	858			2700	2915	13.6	119.6	27.0	13.4					1/2"	1"					
SD	500	1000	1400	1430	1705	1019	294.2	1059			2700	3135	13.6	119.6	27.0	13.4					1/2"	1"					
SD	600	1200	1600	1630	2035	1119	423.8	1525.5			2700	3785	14.7	305.2	27.0	13.4					1/2"	1"					



		Standart; Nom. 1.5 m/s										Hi-Flow; nom. 3 m/s															
		nom. = 1.5 m³/h										max. = 3 m³/h															
mm	in	OD	L	LF	H	h	h ₁	h ₂	h ₃	h ₄	h ₅	h ₆	h ₇	h ₈	h ₉	h ₁₀	h ₁₁	h ₁₂	h ₁₃	h ₁₄	h ₁₅	h ₁₆	h ₁₇	h ₁₈	h ₁₉	h ₂₀	
SC	50	168.3	330	350	632	265	3.3	12	3		880	370	5.8	21	11.8						1.3/4"	1/2"	1"				
SC	65	168.3	330	350	632	265	6.3	22.5	2.7		880	370	10.0	36	11.6						1.3/4"	1/2"	1"				
SC	80	219.1	450	470	791	345	8.3	30	2.9		1110	480	15.0	54	12.4						1.3/4"	1/2"	1"				
SC	100	219.1	455	475	791	345	12.5	45	3.7		1110	480	21.3	84	14.4						1.3/4"	1/2"	1"				
SC	125	323.9	615	635	1064	480	20.8	75	4.2		1540	700	16.7	132	16.8						1.3/4"	1/2"	1"				
SC	150	323.9	615	635	1064	480	31.3	112.5	4.9		1540	700	13.8	150	19.4						1.3/4"	1/2"	1"				
SC	200	400	745	775	1397	615	52.1	187.5	5.8		1960	920	14.2	139	23.1						1.3/4"	1/2"	1"				
SC	250	500	860	890	1571	815	83.3	300	6.9		2650	1250	14.6	139	23.1						1.3/4"	1/2"	1"				
SC	300	600	975	1005	1902	1120	114.6	412.5	7.7		3160	1510	13.8	103.8	27.0	13.4					1.3/4"	1/2"	1"				
SC	350	700	1098	1128	2709	1553	143.8	517.5	8.8		2700	3570	13.8	103.8	27.0	13.4					1.3/4"	1/2"	1"				
SC	400	800	1194	1226	3030	1691	188.1	678			2700	3900	13.6	119.6	27.0	13.4					1.3/4"	1/2"	1"				
SC	450	900	1300	1330	3341	1873	238.1	858			2700	4330	13.6	119.6	27.0	13.4					1.3/4"	1/2"	1"				
SC	500	1000	1400	1430	3641	2065	294.2	1059			2700	4800	13.6	119.6	27.0	13.4					1.3/4"	1/2"	1"				
SC	600	1200	1600	1630	4240	2438	423.8	1525.5			2700	5690	14.7	305.2	27.0	13.4					1.3/4"	1/2"	1"				

